

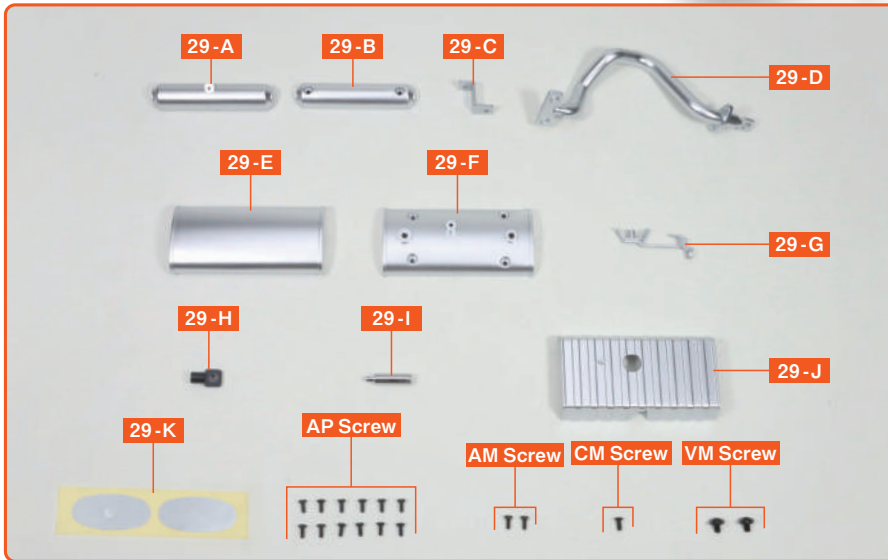
## Issue 29

In this issue, you will complete the exhaust pipe and attach it to the floor panel assembled up to Issue 28. You will also fit the springs to the rear axle and attach it to the rear panel.



# Attach the exhaust pipe and muffler

※ In this guide "Left" or "(L)", and "Right" or "(R)", refer to the direction as viewed from the driver's seat.



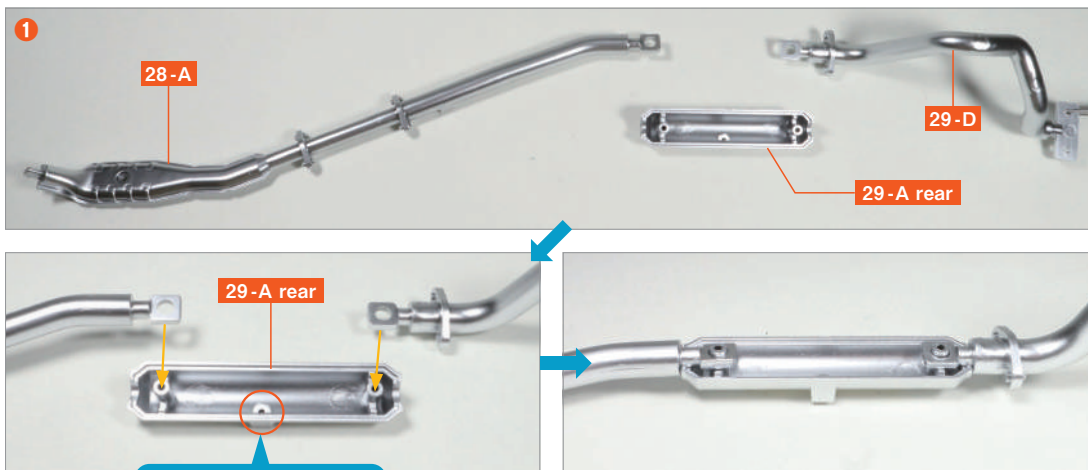
- 29-A** Sub Muffler (1)
- 29-B** Sub Muffler (2)
- 29-C** Sub Muffler Bracket
- 29-D** Rear Exhaust Pipe
- 29-E** Main Muffler (1)
- 29-F** Main Muffler (2)
- 29-G** Main Muffler Bracket
- 29-H** Tailpipe Connector
- 29-I** Standard Tailpipe
- 29-J** Main Muffler Insulator
- 29-K** Sticker (one spare included)
- AP Screw** (1.7×4mm) ×12+Spare
- AM Screw** (1.7×4mm) ×2+Spare
- CM Screw** (2.0×4mm) ×1+Spare
- VM Screw** (2.3×4×6mm) ×2+Spare

View the follow-along video



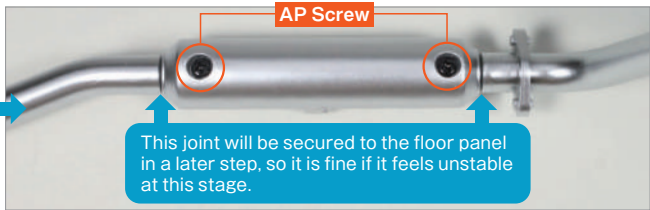
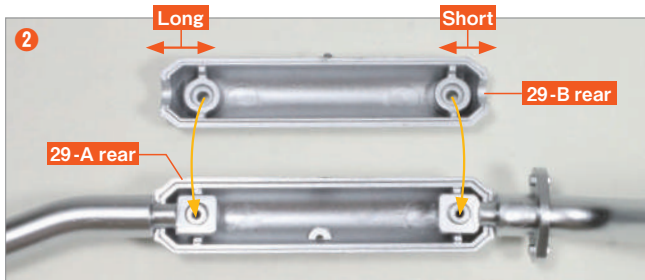
※ Due to the model's design, the shapes of some parts may differ from those of the real vehicle.

### step 1 Assemble the exhaust pipe



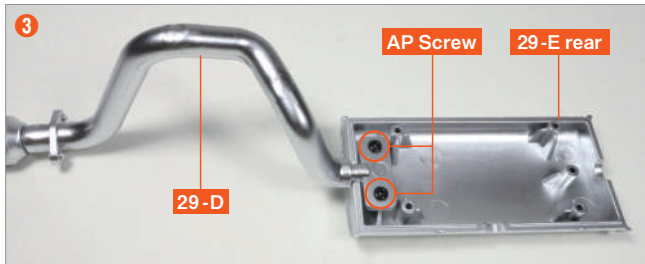
Fit the holes at the ends of the front exhaust pipe (1) **28-A**, supplied in Issue 28, and the rear exhaust pipe **29-D** onto the two protrusions on the screw holes on the reverse side of the sub muffler (1) **29-A**.

Ensure that the semicircular screw holes are facing downwards.

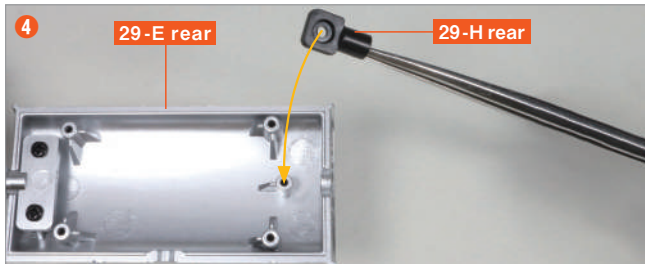


This joint will be secured to the floor panel in a later step, so it is fine if it feels unstable at this stage.

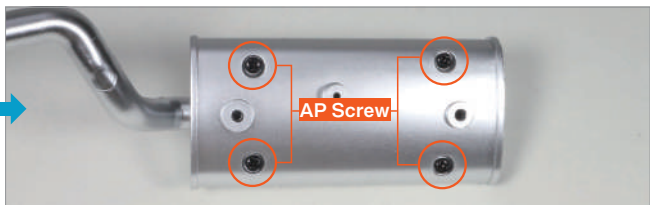
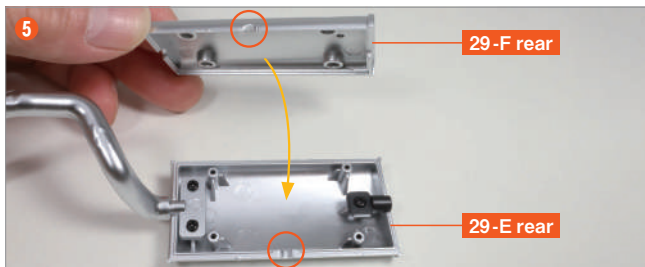
Align the screw holes on the reverse side of **29-A** with those on the reverse side of sub muffler (2) **29-B**, fit them together, and secure the two points with **AP screws**.



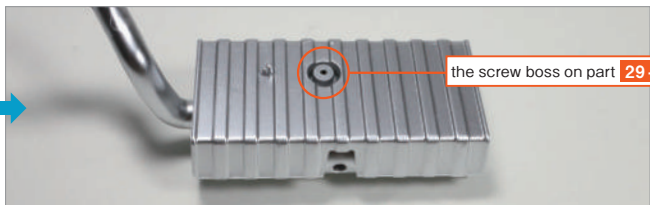
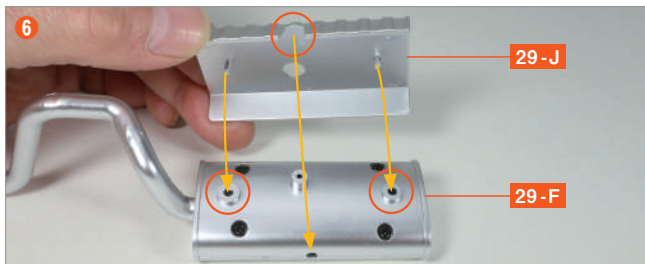
Fit the screw holes of **29-D** onto the recess and the two protrusions on the screw holes on the reverse side of main muffler (1) **29-E**, then secure the two points with **AP screws**.



Fit the screw hole of the tailpipe connector **29-H** onto the other recess and protrusion on the screw hole on the reverse side of **29-E**, then secure it with an AP screw.



Align the protrusions on the screw holes of **29-E** with those on the reverse side of main muffler (2) **29-F**, fit them together, and secure the four points with **AP screws**.



Insert the protrusions of the main muffler insulator **29-J** into the two holes in **29-F**.



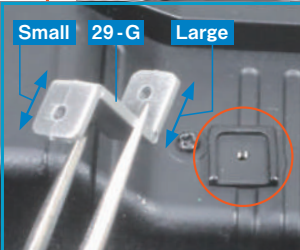
Peel one sticker **29-K** from the backing sheet and apply it to the surface where **29-E** and **29-F** are joined.

Do not apply the central circular section of **29-K**. Align the central hole of **29-K** with **29-H**.

**Step complete**

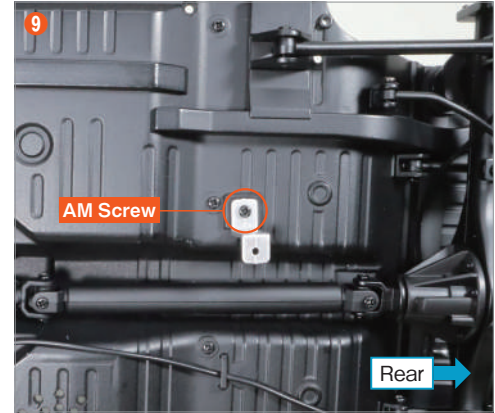


## step 2 Attach the exhaust pipe to the floor panel

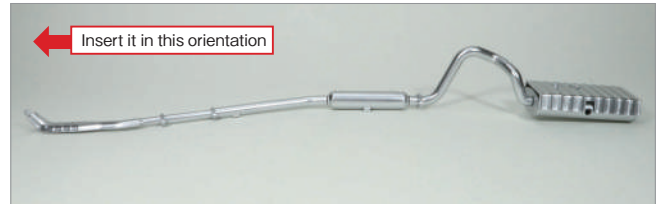
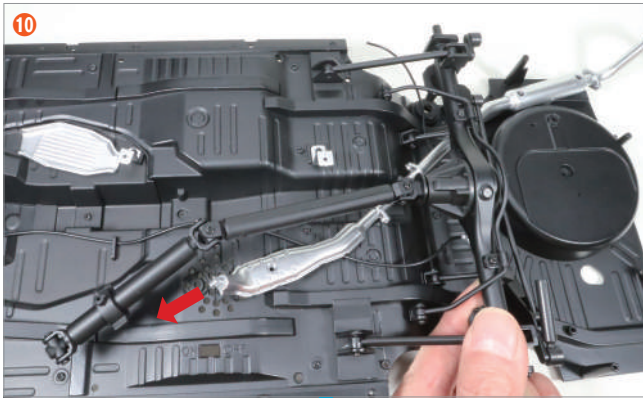


When positioning **29-G**, ensure that the side with the larger hole containing the screw hole is aligned with **19-A**.

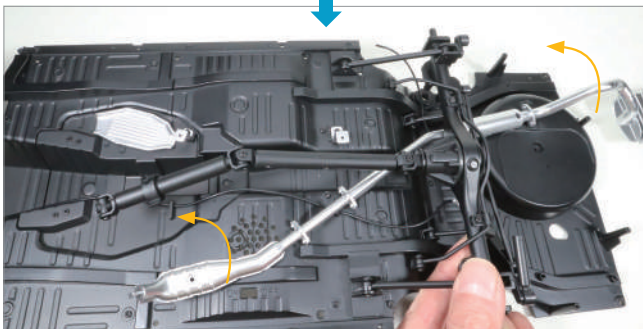
Take the floor panel assembled up to Issue 28, and align the screw hole of the main muffer bracket **29-G** with the screw hole on the reverse side of the floor pan **19-A** and the Ushaped protrusion.



Secure it with an **AM screw**.



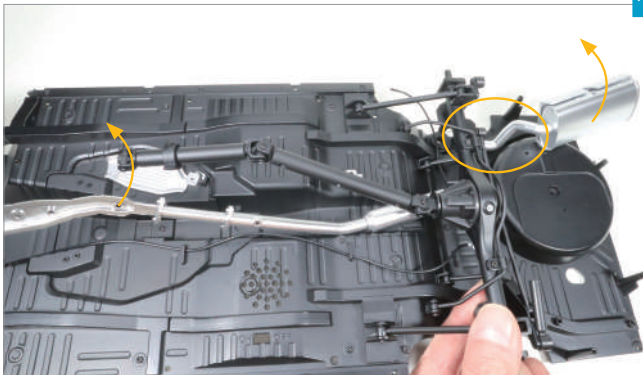
Attach the exhaust pipe to the floor panel. Lift the rear axle and insert the exhaust pipe assembled in **Step 1**, passing it beneath the rear axle.




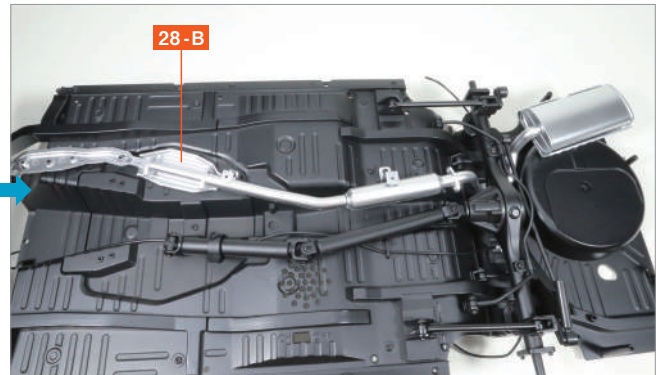
Rotate it in the direction of the arrow.



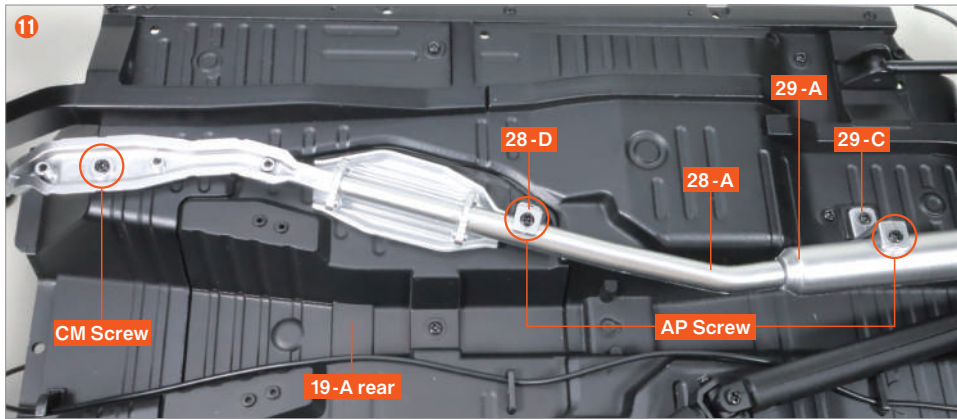
Point the tip in the direction of the arrow.



While rotating it in the direction of the arrow, insert the circled  section beneath the rear axle.



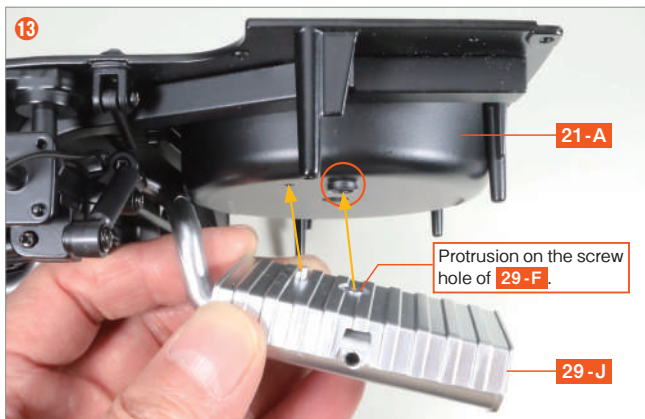
Place the front section onto the front insulator **28-B**.



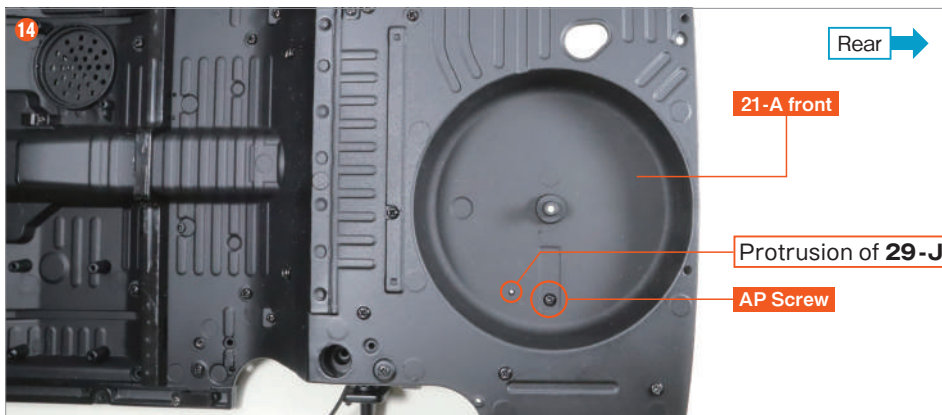
Align the front screw hole of **28-A** with the screw hole on the reverse side of **19-A**, and secure it with a **CM screw**. Then align the screw holes of **28-D** and **28-A**, and **29-C** and **29-A**, and secure them with **AP screws**.



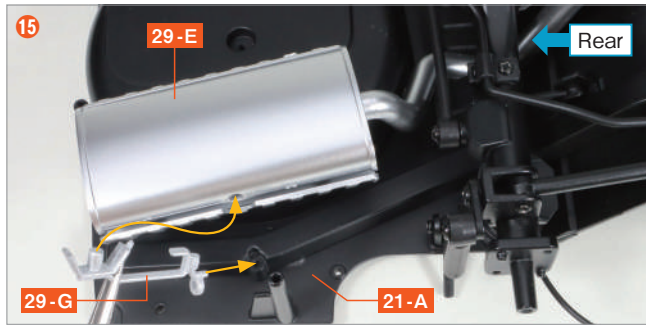
Fit the three protrusions on the reverse side of the front exhaust pipe (2) **28-C**, supplied in Issue 28, into the three holes in **28-A**.



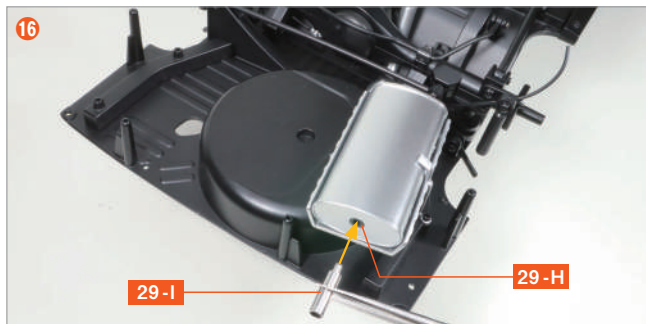
Fit the three protrusions on the reverse side of the front exhaust pipe (2) **28-C**, supplied in Issue 28, into the three holes in **28-A**.



Secure them from the front side of **21-A** with **AP screws**.



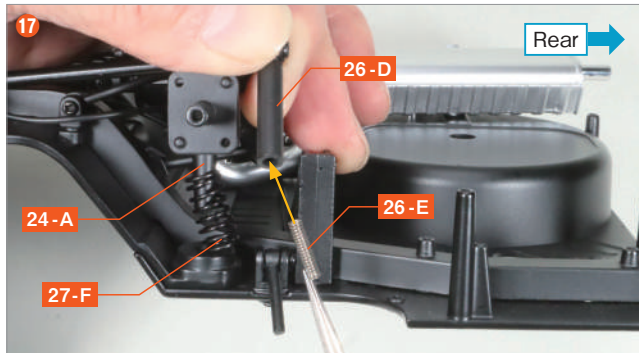
Fit the protrusion and screw hole of the main muffler bracket **29-G** into the recess of **29-E** and align it with the screw hole on the reverse side of **21-A**, then secure it with an **AM screw**.



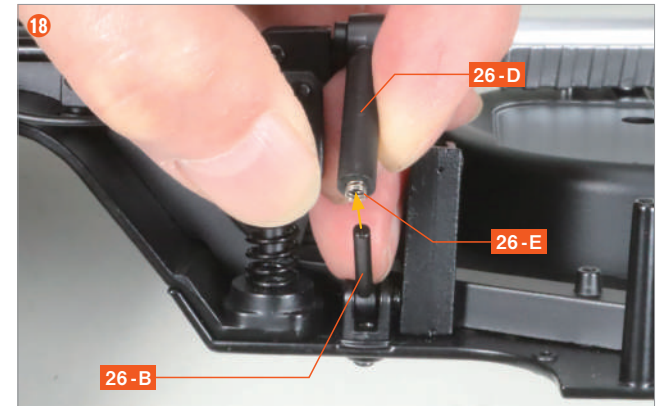
If **29-I** comes loose easily, apply a small amount of all-purpose adhesive when fitting it into place.

Insert the protrusion of the standard tailpipe **29-I** into the hole in **29-H**.

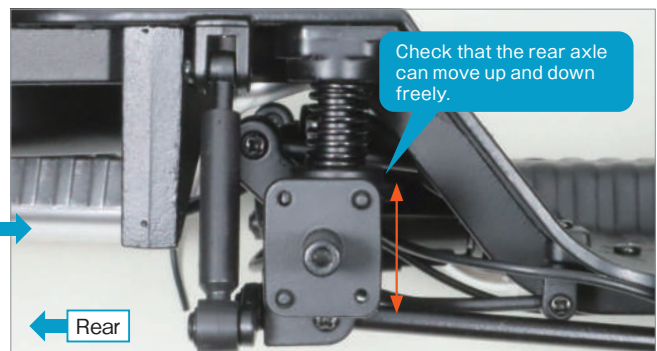
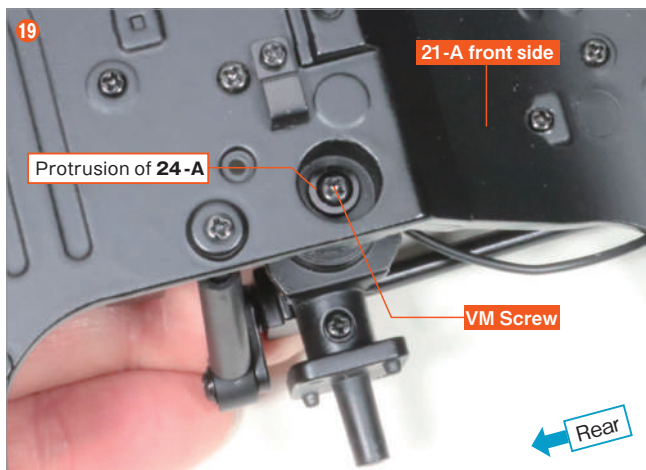
## step 3 Secure the rear axle to the floor panel



Prepare the two shock absorber springs **26-E** supplied in Issue 26 and the two rear coil springs **27-F** supplied in Issue 27. Lift the rear axle, fit one **27-F** over the protrusion on the upper rear axle housing **24-A**, and insert one **26-E** into the hole in the lower rear shock absorber **26-D**.

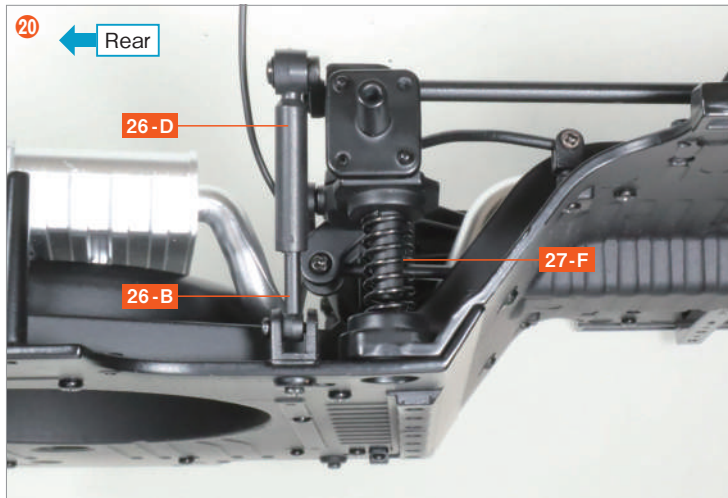


While pressing **26-E** into **26-D**, insert the tip of the upper rear shock absorber **26-B** into the hole in **26-D**.

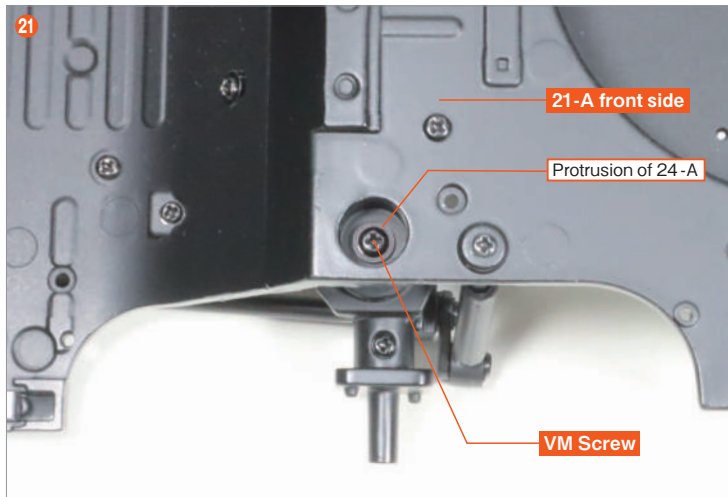


Check that the rear axle can move up and down freely.

Hold **26-B** in place to prevent it from coming out of **26-D**, then turn the floor panel over to the front side and press the protrusion of **24-A** into the hole in **21-A**. With the tip of **24-A** slightly protruding through the hole in **21-A**, secure it with a **VM screw**. At this point, make sure the **VM screw** is tightened fully to the base.



Repeat the same process on the opposite side, fitting the other **27-F** over the protrusion on **24-A** and inserting the other **26-E** into the hole in **26-D**. Then, while pressing **26-E** into **26-D**, insert the tip of the upper rear shock absorber **26-B** into the hole in **26-D**.



Hold **26-B** in place to prevent it from coming out of **26-D**, then turn the floor panel over to the front side and press the protrusion of **24-A** into the hole in **21-A**.

With the tip of **24-A** slightly protruding through the hole in **21-A**, secure it firmly with a **VM screw**. Then, as in Step **18**, check that the rear axle can move up and down freely.

## Complete

The assembly for Issue 29 is complete.

With the exhaust pipe and rear axle now attached to the floor panel assembled so far, the Trueno chassis is nearing completion. From this point on, it will be referred to as the chassis. Please note that the catalytic converter for the exhaust pipe will be fitted in a later issue. In the next issue, you will assemble the left rear wheel.

